



INNOMAC[®]
machines with global innovation...



...led by innovation

PASSION

VALUES

QUALITY

INNOVATION



ABOUT US



WINNER OF BEST COMPANY TO WORK FOR 2025

INNOMAC, Innovative Machines, the name itself speaks...

As an Engineering Company based at Bengaluru, that is envisioned to bring about the transformation in construction and infrastructure industry through advanced technological innovations leading to manufacturing of bench marking featured machines under "Make in India" concept.

The company envisions to attend the first choice of customers for construction equipments through continuous research and development.

INNOMAC believes there is a need to bring innovation through technological Advancement, Research, World Class Systemisation in every product & service we deal with. The prime focus of the company is on customer needs, evaluation of the current constraints and development of the appropriate solution.

INNOMAC has In-house R&D team, who constantly strive to bring their best solution for every task / product we undertake. They are equipped with the world's best software with latest versions. Every component is designed carefully to suit the need of the application. Each component undergoes a stiff design calculation and also goes with Finite Elements Analysis (FEA) in the Software. Hence the **INNOMAC** products are Robust, Reliable and best suits to their applications.

INFRASTRUCTURE



INNOMAC manufacturing facility is having its factory setup on NH-4 (Tumkur Road) that has proximity to Asia's biggest industrial and manufacturing hub at Peenya Industrial Area. The factory is setup on an area of 50,000 sq. ft, and is equipped with latest machinery. IT Infrastructure, software and supported by qualified team of professional.

The Company has established Sales, Service and Spare parts network through pan India operation in major cities of India (Mumbai, Pune, Delhi, NCR, Chennai, Orissa Hyderabad, Kolkata, Kerala, Karnataka and so on.)

On top of the layer, the management team itself is from the industry with over 3 decades of experience in the field of construction equipments and has been the witness of transformation that has taken place in the Construction Segment.

MANAGEMENT

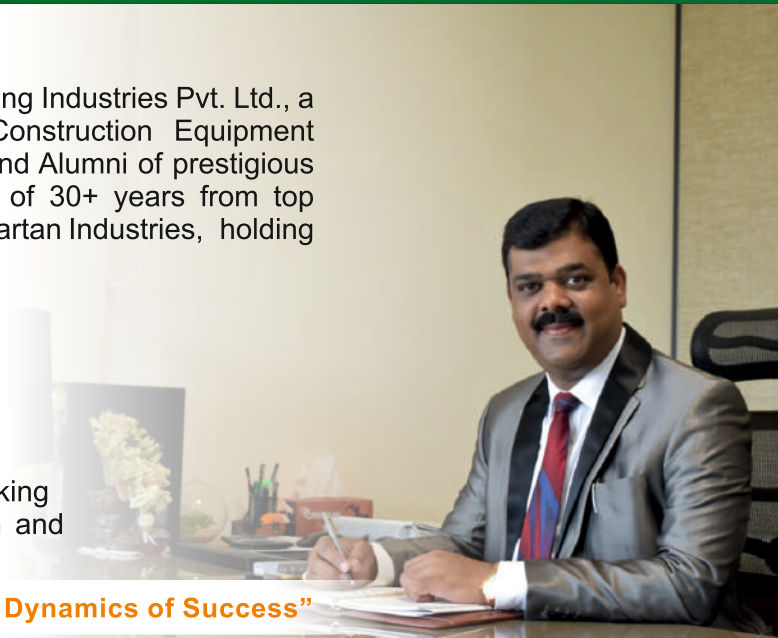
Rajamurthy M R - Managing Director

Rajamurthy M R, Managing Director of Innomac Engineering Industries Pvt. Ltd., a Bengaluru based and one of the fastest growing Construction Equipment Manufacturing Company. He is a Mechanical Engineer and Alumni of prestigious "UVCE - Bangalore University, having vast experience of 30+ years from top Corporates like M/s Ace Designer Group, Tata Group & Spartan Industries, holding Senior Management Positions

He has been Awarded for many Achievements, viz.,
"Gold Winner of Tata Business Excellence"
"Organisational Leader Award"
"Business Turn Around Award".

He is committed to Implementation and Execution of all working Methodologies, Roadmap of Company's Vision, Mission and Objectives to reach the Organisational Goals.

"Dedication, Determination and Devotion are the three Dynamics of Success"



OUR VISION, MISSION & VALUES



INNOMAC®
machines with global innovation...

VISION

"To be an excellent company with first choice of customers for the global innovative construction equipment having thoughtful, safe and reliable features."

VALUE PILLERS

INNOVATION

INTEGRITY

PASSIONATE

CUSTOMER CENTRIC

MISSION

"We are committed to drive the continual innovations with in-house R & D and expertise to meet our customer needs."

CULTURAL FOUNDATION

DYNAMIC

DEVOTION

DEDICATION

DETERMINATION



INNOMAC[®]
machines with global innovation...

View the site working



BAR CUTTING MACHINE

INNOMAC designs, manufactures and supplies the range of TMT Rebar Cutting machines. Our machines are highly efficient, safe and durable with advanced features. Quality stands first for **INNOMAC** and our machines reflect it in every aspect.

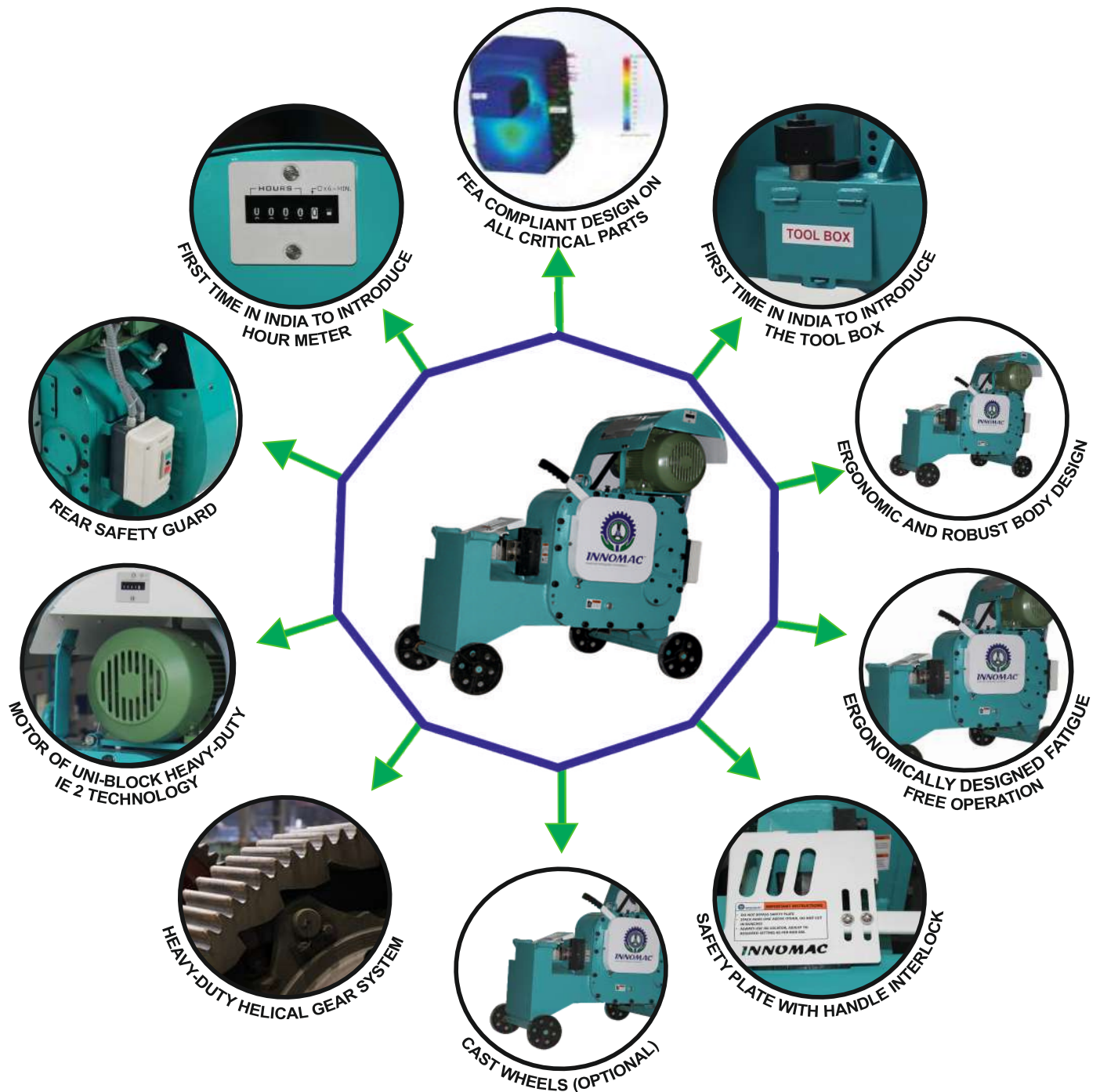
SPECIFICATION

| Model | Model Capacity | Stroke / Min | Over all Weight (KG) | Oil Volume (Ltrs) | Over all Size (mm) |
|---------------|-----------------------------|--------------|----------------------|-------------------|--------------------|
| ICM 42 | 3.7 kW / 5.0 HP 2900 RPM | 87.5 | 440 | 4.6 | 1105 x 580 x 880 |
| ICM 52 | 3.7 kW / 5.0 HP 2900 RPM | 58.5 | 570 | 5 | 1154 x 532 x 944 |
| ICM 55 | 5.5 kW / 7.5 HP 2900 RPM | 59 | 800 | 7 | 1280 x 780 x 1110 |

CAPACITY CHART

| BAR CUTTING MACHINE | | | | | | | | | | | |
|---------------------|--|---------------------|-----|-----|-----|----|----|----|----|---|--|
| Model | Bars Specification | Bars Diameter in mm | | | | | | | | | |
| | | 40 | 36 | 32 | 25 | 20 | 16 | 12 | 10 | 8 | |
| ICM 42 | No. of Bars- FE 500(50Kg/mm ²) | ... | 1 | 1 | 1 | 1 | 2 | 3 | 4 | 5 | |
| | No. of Bars- FE 500D(60Kg/mm ²) | ... | ... | 1 | 1 | 1 | 2 | 3 | 3 | 4 | |
| | No. of Bars- FE 550D(70Kg/mm ²)/FE 600 | ... | ... | ... | ... | 1 | 2 | 3 | 3 | 4 | |
| | No. of Bars- FE 500S(78 Kg/mm ²) | ... | ... | ... | ... | 1 | 2 | 3 | 3 | 4 | |
| ICM 52 | No. of Bars- FE 500(50Kg/mm ²) | 1 | 1 | 1 | 2 | 2 | 3 | 5 | 6 | 8 | |
| | No. of Bars- FE 500D(60Kg/mm ²) | ... | 1 | 1 | 1 | 2 | 3 | 4 | 6 | 8 | |
| | No. of Bars- FE 550D(70Kg/mm ²)/FE 600 | ... | 1 | 1 | 1 | 2 | 3 | 4 | 6 | 7 | |
| | No. of Bars- FE 500S(78 Kg/mm ²) | ... | ... | 1 | 1 | 2 | 3 | 4 | 6 | 7 | |
| ICM 55 | No. of Bars- FE 500(50Kg/mm ²) | 1 | 1 | 1 | 1 | 2 | 3 | 5 | 6 | 8 | |
| | No. of Bars- FE 500D(60Kg/mm ²) | 1 | 1 | 1 | 1 | 2 | 3 | 5 | 6 | 8 | |
| | No. of Bars- FE 550D(70Kg/mm ²)/FE 600 | 1 | 1 | 1 | 1 | 2 | 3 | 5 | 6 | 8 | |
| | No. of Bars- FE 500S(78 Kg/mm ²) | 1 | 1 | 1 | 1 | 2 | 3 | 5 | 6 | 8 | |

FEATURES OF INNOMAC BAR CUTTING MACHINE



- All critical parts of the machine are designed and tested by FEA Software to achieve best performance.
- Tool Box: Innomac machine has introduced a toolbox in cutting machine for the first time in the industry. It is for storing tools and spares like allen key set, blades etc.
- Hour Meter :Innomac is the first company in India to introduce Hour meter in cutting and bending machinery. This helps P&M team to monitor machine utilization and plan scheduled maintenance.
- All models are provided with best in the industry
- DOL starter with built in additional safety for over and under voltage protection and reverse rotation prevention.

- Ergonomically designed hand lever is easy to operate using operator body weight and need less effort & safe operation from front side.
- Cast wheels are provided as a default option with all variants which aid in easy movement of a machine at site.
- All gears are precision helical gears which are smoother, quieter and more efficient than primitive spur gear design.
- All models come with motors of uniblock heavy-duty motors.
- All models come with safety plate with handle interlock, which provide additional safety as the operating lever will be locked when safety plate is in open position.
- Special cutting blade designed to cut TMT bars up to 25HRC (Optional)



INNOMAC[®]
machines with global innovation...

View the site working



BAR BENDING MACHINE

INNOMAC designs, manufactures and supplies the range of TMT Rebar Bending Machines. Our machines are highly efficient, safe and durable with advanced features. Quality stands first for INNOMAC and our machines reflect it in every aspect.

SPECIFICATION

| Model | Model Capacity | Bend Wheel RPM | Overall Size L X B X H (mm) | Overall Weight | Bend Wheel Dia (mm) | Max Bend Radius | Bushes Supplied |
|--------|-----------------------------|----------------|-----------------------------|----------------|---------------------|--------------------------|-------------------------------|
| IBM 42 | 3.7 kw / 5.0 HP 1440 RPM | 9.05 | 710 x 820 x 970 | 338 | 350 | 4D for Ø25 3D for Ø32 | Ø60, Ø70 Ø100, Ø120 |
| IBM 52 | 4.0 kw / 5.5 HP 1440 RPM | 9.05 | 868 x 950 x 963 | 399 | 426 | 5D for Ø32 4D for Ø36 | Ø60, Ø70, Ø100, Ø120, Ø160 |
| IBM 55 | 5.5 kw / 7.5 HP 1440 RPM | 5.05 | 990 x 950 x 1110 | 580 | 500 | 4D for Ø36 4D for Ø40 | Ø60, Ø70, Ø100, Ø120, Ø160 |

CAPACITY CHART

| BAR BENDING MACHINE | | | | | | | | | | |
|---------------------|--|---------------------|-----|-----|----|----|----|----|----|---|
| Model | Bars Specification | Bars Diameter in mm | | | | | | | | |
| | | 40 | 36 | 32 | 25 | 20 | 16 | 12 | 10 | 8 |
| IBM 42 | No. of Bars- FE 500(50Kg/mm ²) | ... | 1 | 1 | 1 | 2 | 3 | 3 | 4 | 6 |
| | No. of Bars- FE 500D(60Kg/mm ²) | ... | ... | 1 | 1 | 1 | 2 | 3 | 4 | 5 |
| | No. of Bars- FE 550D(70Kg/mm ²)/FE 600 | ... | ... | 1 | 1 | 1 | 2 | 3 | 4 | 5 |
| | No. of Bars- FE 500S(78 Kg/mm ²) | ... | ... | ... | 1 | 1 | 2 | 3 | 4 | 5 |
| IBM 52 | No. of Bars- FE 500(50Kg/mm ²) | 1 | 1 | 1 | 2 | 2 | 3 | 5 | 6 | 8 |
| | No. of Bars- FE 500D(60Kg/mm ²) | ... | 1 | 1 | 1 | 2 | 3 | 4 | 6 | 8 |
| | No. of Bars- FE 550D(70Kg/mm ²)/FE 600 | ... | 1 | 1 | 1 | 2 | 3 | 4 | 5 | 7 |
| | No. of Bars- FE 500S(78 Kg/mm ²) | ... | ... | 1 | 1 | 2 | 3 | 4 | 5 | 7 |
| IBM 55 | No. of Bars- FE 500(50Kg/mm ²) | 1 | 1 | 1 | 2 | 2 | 3 | 5 | 7 | 8 |
| | No. of Bars- FE 500D(60Kg/mm ²) | 1 | 1 | 1 | 2 | 2 | 3 | 5 | 7 | 8 |
| | No. of Bars- FE 550D(70Kg/mm ²)/FE 600 | 1 | 1 | 1 | 2 | 2 | 3 | 5 | 6 | 8 |
| | No. of Bars- FE 500S(78 Kg/mm ²) | 1 | 1 | 1 | 2 | 2 | 3 | 5 | 6 | 8 |

FEATURES OF INNOMAC BAR BENDING MACHINE



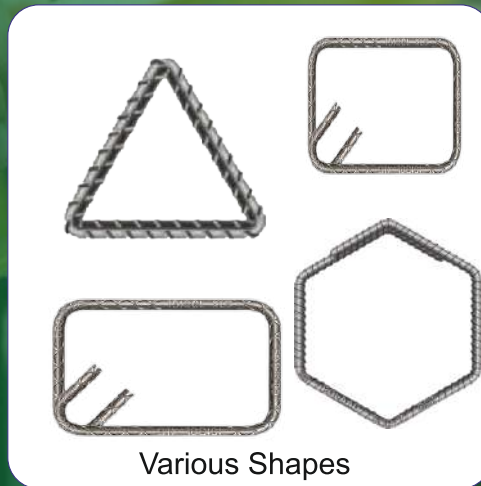
- Hour Meter : Innomac is the first company in India to introduce hour meter in cutting and bending machines. This helps P&M team to monitor machine utilization and plan scheduled maintenance.
- 4 Pre-Set Angles: Innomac is the first in India to introduce and supply 4 pre-set angles (Like 30°,45°,60°,90°) PLC control system. Machine is controlled by a PLC instead of traditional relay system for trouble free operation.
- PLC Panel placed on operator side for ease of service ability.
- Maintenance free electrical braking system, Imported fully enclosed IP55 foot pedal.

- Molly grease filled planetary gear box Lubricated for life.
- Rigid sliding block with C-Guide provides more ruggedness.
- Completely powder coated machine body for better protection and aesthetics.
- All pins and bushes with hard chrome plating for better protection.
- Rigid and easily accessible grouting legs for easy grouting and better machine rigidity.



INNOMAC[®]
machines with global innovation...

View the site working



STIRRUP BENDING MACHINE

INNOMAC designs, manufactures and supplies the range of Rebar Stirrup Bending Machines. Our machines are highly efficient, Safe and durable with advanced features. Quality stands first for **INNOMAC** and our machines reflect it in every aspect.

SPECIFICATION

| Machine Model | Motor Capacity | Bend Wheel RPM | Overall wt (KG) | Overall Size LxWxH(mm) | Bend Wheel Dia(mm) | Pins (mm) |
|---------------|---------------------------|----------------|-----------------|------------------------|--------------------|------------|
| IBM 16 | 0.75 kW/1.0HP 1440 RPM | 12 | 130 | 1520x580x970 | 190 | Ø 20, Ø 25 |

CAPACITY CHART

| Model IBM 16 | Nominal Dia in mm Bar Specifications | Number of Bars | | | |
|-----------------|--|----------------|----|----|---|
| | | 16 | 12 | 10 | 8 |
| | No. of Bar - FE 500 (50kg / mm ²) | 1 | 1 | 2 | 5 |
| | No. of Bar - FE 500 (60kg / mm ²) | | 1 | 2 | 4 |
| | No. of Bar - FE 550D/600 (70kg / mm ²) | | | 1 | 4 |



INNOMAC[®]
machines with global innovation...

View the site working



ISBM-52



Various Shapes

ISBM-55



SPIRAL BENDING MACHINE

INNOMAC designs, manufactures and supplies the range of Rebar Spiral Bending Machines. Our machines are highly efficient, Safe and durable with advanced features. Quality stands first for **INNOMAC** and our machines reflect it in every aspect.

SPECIFICATION

| Machine Model | Motor Capacity | Bend Wheel RPM | Overall wt (KG) | Overall Size LxWxH(mm) |
|---------------|------------------------------------|----------------|-----------------|------------------------|
| ISBM 52 | 4 kW/5.4 HP 1445 RPM | 9.05 | 380 | 950x860x1015 |
| ISBM-55 | 2x 4 kW (2x 5.4 HP) 1445 RPM | 9.05 | 580 | 1105 x 840 x1122 |

CAPACITY CHART

| ISBM 52 | Nominal Bar Dia (mm) | 20 | 16 | 12 | 10 | 8 | 6 | | | | |
|---------|----------------------|-----|-----|-----|-----|-----|-----|-----|-----|-----|-----|
| | Ring Dia Min (mm) | 500 | 450 | 400 | 350 | 300 | 300 | | | | |
| ISBM 55 | Nominal Bar Dia (mm) | 40 | 36 | 32 | 25 | 20 | 16 | 12 | 10 | 8 | 6 |
| | Ring Dia Min (mm) | 600 | 500 | 400 | 320 | 300 | 270 | 270 | 270 | 300 | 320 |



INNOMAC[®]
machines with global innovation...

View the site working



SCRAP BAR STRAIGHTENING MACHINE

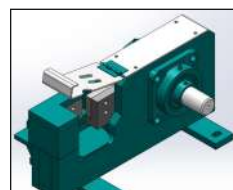
INNOMAC Designs, Manufactures and Supplies the range of Scrap Straightening Machine
Our machines are highly efficient, Safe and durable with advanced features. Quality stands first for **INNOMAC** and our machines reflect it in every aspect.

SPECIFICATION

| Machine Model | Capacity Dia (mm) | Motor Capacity | Output Speed | Gear Box | Overall Size | Overall Wt (kg) |
|----------------|-------------------|----------------|--------------|-----------|-------------------|-----------------|
| ISSM-12 | 6 to 12 MM | 5.5kW/7.5 HP | 15 m/min | Planetary | 1340 x 930 x 1290 | 680 |

UNIQUE FEATURES OF INNOMAC SCRAP STRAIGHTENING MACHINE - ISSM 12

- In-Built Toolbox
- Hour Meter for Productivity & Maintenance Schedule
- In-Built Wheels for Easy Mobility
- In-Built Semi-Automatic Cutting Machine
- Schneider/ Siemens /Equivalent contractor based panel is used
- Planetary Gear System in the Gear Box for higher Reliability & Efficiency





INNOMAC[®]
machines with global innovation...

View the site working



PASSENGER CUM MATERIAL HOIST - SINGLE CAGE

INNOMAC Passenger cum material hoist, models: IPM100, 150, 200 single cage and IPM150x150, IPM200x200 Twin Cage are a 100% make in India concept product designed to lift 1000Kgs, 1500Kgs, 2000Kgs and 3000Kgs (2x1500) & 4000Kgs (2x2000). It is the most robust, efficient, reliable, and Safest PM Hoist for construction sites for various construction activities.

IPM150 & IPM200 Single Cage

01. Break Motors
02. Ground Enclosure
03. Ground Enclosed Door Limit Switch
04. Tertiary Mechanical Lock Safety System
05. Cage Top Safety Railings
06. Anti-skid Chequered Floor Top Plate
07. Exit Door Mechanical Lock System
08. Entry Door Mechanical Lock System
09. Dead (RED) Mast Unit
10. Erection Platform
11. Maintenance Rack Lock Device
12. Entry Door Limit Switch
13. Exit Door Limit Switch
14. Rack Searching Limit Switch
15. Cable Jamming Limit Switch
16. Top Limit Switch.
17. Bottom Limit Switch
18. Erection Platform Limit Switch
19. Top Override Limit Switch
20. Slow Speed Limit Switch
21. Service Door Limit Switch
22. Emergency Switch with Keys
23. Gearbox Protection Guards
24. AVM between Base Frame & Cage
25. Anti-skid Chequered Inside Cage Bottom Plate
26. Jib Crane System
27. Cable Trolley System (Optional)
28. Safety Alarm
29. Biometric Lock System (Optional)
30. Overload Sensor Unit: Load Cell (Optional)
31. Anemometer (Optional)
32. HMI with Touch Screen Display (Optional)
33. Floor Selector System (Optional)
34. Fire Extinguisher (Optional)
35. Bus Bar System (Optional)
36. Safety Device / Free Fall Arrestor

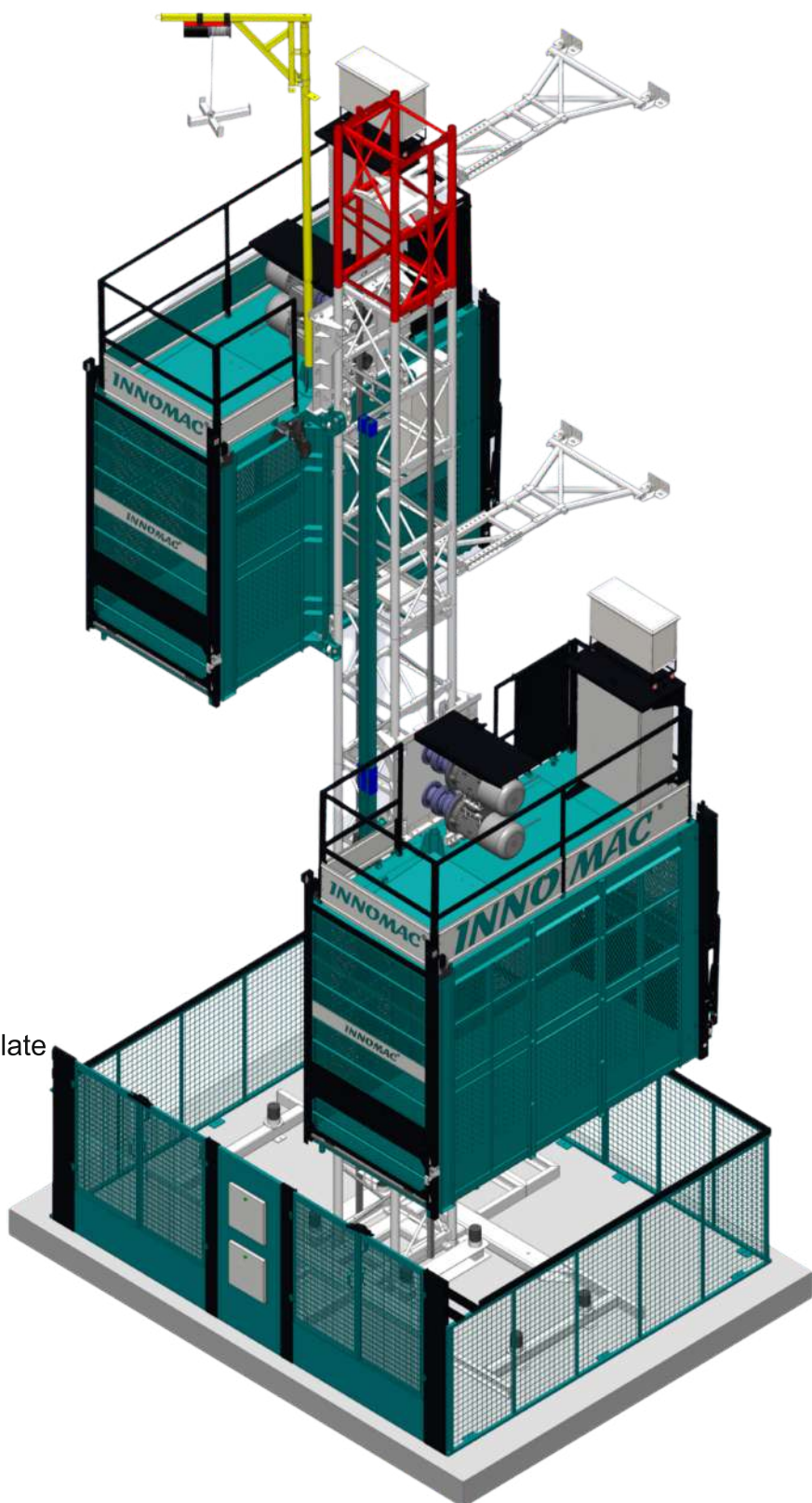


PASSENGER CUM MATERIAL HOIST - TWIN CAGES

IPM150x150 & IPM200x200 Twin Cages

SAFETY FEATURES:

- 01.Safety Device / Free Fall Arrestor
- 02.Break Motors
- 03.Ground Enclosure
- 04.Ground Enclosed Door Limit Switch
- 05.Tertiary Mechanical Lock Safety System
- 06.Cage Top Safety Railings
- 07.Anti-skid Chequered Floor Top Plate
- 08.Exit Door Mechanical Lock System
- 09.Entry Door Mechanical Lock System
- 10.Dead (RED) Mast Unit
- 11.Erection Platform
- 12.Maintenance Rack Lock Device
- 13.Entry Door Limit Switch
- 14.Exit Door Limit Switch
- 15.Rack Searching Limit Switch
- 16.Cable Jamming Limit Switch
- 17.Top Limit Switch.
- 18.Bottom Limit Switch
- 19.Erection Platform Limit Switch
- 20.Top Override Limit Switch
- 21.Slow Speed Limit Switch
- 22.Service Door Limit Switch
- 23.Emergency Switch with Keys
- 24.Gearbox protection Guards
- 25.AVM between Base Frame & Cage
- 26.Anti-skid Chequered Inside Cage Bottom Plate
- 27.Cable Trolley System
- 28.Biometric Lock System (Optional)
- 29.Overload Sensor Unit: Load Cell (Optional)
- 30.Anemometer (Optional)
- 31.HMI with Touch Screen Display (Optional)
- 32.Floor Selector System (Optional)
- 33.Fire Extinguisher (Optional)
- 34.Bus Bar System (Optional)
35. Jib Crane System
36. Safety Alarm



PASSENGER CUM MATERIAL HOIST FEATURES

Standard Features

| Single Cage IPM100, 150, 200 | | Twin Cage IPM150x150, 200x200 | |
|---------------------------------|--|----------------------------------|--|
| 1 | Safety Device | 1 | Safety Device |
| 2 | Ground Enclosure | 2 | Ground Enclosure |
| 3 | Top Railings | 3 | Top Railings |
| 4 | Safety Limit Switches | 4 | Safety Limit Switches |
| 5 | Cabin Light | 5 | Cabin Light |
| 6 | Fan | 6 | Fan |
| 7 | Safety Alarm | 7 | Safety Alarm |
| 8 | Hour Meter | 8 | Hour Meter |
| 9 | First Aid Box | 9 | First Aid Box |
| 10 | VFD & DBR | 10 | VFD & DBR |
| 11 | Document Holder | 11 | Document Holder |
| 12 | Erection Platform | 12 | Erection Platform |
| 13 | Cable Drum System | 13 | Bus Bar System |
| 14 | Jib Crane System | 14 | Jib Crane System |
| 15 | Anti-skid Chequered Floor Top Plate | 15 | Anti-skid Chequered Floor Top Plate |
| 16 | Anti-skid Chequered Floor Inside Cage | 16 | Anti-skid Chequered Floor Inside Cage |
| 17 | Gearbox Protection Guards | 17 | Gearbox Protection Guards |
| 18 | Tertiary Mechanical Lock Safety System | 18 | Tertiary Mechanical Lock Safety System |
| 19 | Maintenance Rack Lock Device | 19 | Maintenance Rack Lock Device |
| 20 | Break Motors | 20 | Break Motors |

Optional Features

| Single Cage IPM100,150,200 | | Twin Cage IPM150x150 , 200x200 | |
|-------------------------------|-------------------------------|-----------------------------------|-------------------------------|
| 1 | Load Cell | 1 | Load Cell |
| 2 | Floor Selector System | 2 | Floor Selector System |
| 3 | HMI with Touch Screen Display | 3 | HMI with Touch Screen Display |
| 4 | Biometric Control | 4 | Biometric Control |
| 5 | Fire Extinguisher | 5 | Fire Extinguisher |
| 6 | Cable Trolley System | 6 | Cable Trolley System |
| 7 | Bus Bar System | 7 | Anemometer |
| 8 | Anemometer | | |

ERGONOMIC DESIGN:

INNOMAC Hoists are designed with FEA-compliant parts and assemblies to meet design robustness and reliability needs of the equipment. The CNC Punching, bending Co2 welding operations in the specific dies and fixtures make the unit perfect and less noise and vibrations.

The Modern electric system of the LED Lighting, fan, the smooth operations of the machine with VFD drive, sliding door system, joystick operations with the option of overload cut off, floor selector and emergency switch panel make the operator more comfortable and confident to use the machine and remain fatigue-free.

PASSENGER CUM MATERIAL HOIST TECHNICAL SPECIFICATIONS

| SL.No | SPECIFICATION | IPM150 | IPM200 | IPM150x150 (Twin cage) | IPM200x200 (Twin cage) |
|-------|---|--|--|---------------------------|--|
| 1 | CAPACITY - KG | 1500 | 2000 | 2x 1500 | 2x 2000 |
| 2 | LIFTING SPEED - m/min. | 30 | 30 45 | 30 | 30 45 |
| 3 | MAX. LIFTING HEIGHT - mt. | 150 | 200 | 150 | 200 |
| 4 | RECTANGULAR CAGE SIZE L X B X H - mt. | 2.5x1.4x2.1 | 3x1.4x2.1 | 2.5x1.4x2.1 | 3x1.4x2.1 |
| 5 | GEAR RACK MODULE | 5 | 5 | 5 | 5 |
| 6 | SAFETY DEVICE EACH CAGE | SAJ30-0.9 | SAJ40-1.2 | SAJ30-0.9 | SAJ40-1.2 |
| 7 | SQUARE MAST & PIPE SIZE HEIGHT -1508 mm | 400X400 Tube Ø60.3 | 450X450 Tube Ø60.3 | 450X450 Tube Ø60.3 | 650X650 Tube Ø76.1 |
| 8 | MAST WEIGHT | 65 | 75 | 90 | 122 |
| 9 | WALL TIE INTERVAL - mt. | 6 to 7 | 6 to 7 | 6 to 7 | 6 to 7 |
| 10 | CABLE GUIDES INTERVAL - mt. | 6 | 6 | - | - |
| 11 | JIB CRANE | 1kW, 1phase power | 1kW, 1phase power | 1kW, 1phase power | 1kW, 1phase power |
| 12 | POWER CABLE GUIDE SYSTEM | Cable Drum Bus Bar Cable trolley | Cable Drum Bus Bar Cable trolley | Bus Bar Cable trolley | Bus Bar Cable trolley |
| 13 | FOUNDATIONS DETAILS (L X B X H) mt. | 3.5 x 3 x 0.3 | 4 x 3 x 0.3 | 3.5 x 6 x 0.3 | 4 x 6 x 0.3 |
| 14 | DRIVE BRAKE MOTOR FOR EACH CAGE | 2x 9.6kW, 87 Hz | 2x 11kW, 50 Hz 2x 15kW, 50 Hz | 2x 2x 9.6kW, 87 Hz | 2x 2x 11kW, 50 Hz 2x 2x 15kW, 50 Hz |
| 15 | VFD EACH CAGE SCHNEIDER / MITSUBISHI/ L&T - KW | 22 | 30 37 | 2x 22 | 2x 30 2x 37 |
| 16 | POWER SUPPLY | 415V | 415V | 415V | 415V |

Note1: We do have 2 Pole mast design for IPM100, IPM150 & IPM200 for lift shaft application. Please enquire about the lift shaft application hoists with our executive

Note 2: We also have customised PM hoists suitable to Lift shafts / Duct Area / Underground Tunnel stations etc as per sites requirements.

SAFETY DEVICE

Innomac uses SRIBS brand anti-falling safety device, which is important to ensure safe operation of PM Hoist. It acts as a cage free freefall arrester in case the brake motors fail to hold the cage. It is effective once the cage velocity reaches 1.2m/sec velocity. The centrifugal brake is automatically applied and this gradually stops the cage at a minimum distance ensuring the crew and equipment safety. The anti vibration device mounting in the inner structure reduces the noise occurrence to a great extent and provides a smooth brake operation.



CONTROL PANELS AND LIMIT SWITCHES

The installed electrical components and tele machine limit switches or equivalent ensure a trouble-free operation. Innomac uses Schneider or equivalent premium and reliable brand electrical contactors, relay, MCB etc. They are being used here to avoid damage to electrical motor, thus reducing the frequency of breakdowns. The control Panels are well arranged and all components are made to comply IP55 protection.

SERVICE PLATFORM : WALL TIE INSTALLATION PLATFORM

An extended service platform on top of the cage helps engineers to install the masts, wall ties, and do routine machine service. The platform is a fabricated and P U Painted structure. It is hinged with cage, and rigidly supported by two chains. The platform top base is fitted with an anti-skid checkered plate.

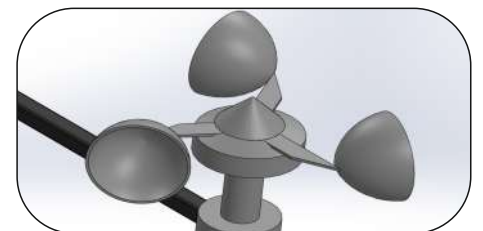


HOT DIP GALVANISATION STRUCTURAL ITEMS

Structural components like Mast, Base Assembly, wall tie base frame carriage and cage base etc are hot dip galvanized with 80 to 100 Microns. Hot dip galvanisation ensures a strong protective zinc coating to steel base material to prevent rusting. Zinc being more durable avoids corrosion in all extreme weather conditions. Galvanised structure is scratch resistant and high in aesthetics.

ANEMOMETER

An ANEMOMETER is an instrument that measures wind speed. Never operate/assemble/disassemble the machine during winds higher than 28 mph (12.5 m/s, 6 on the Beaufort scale).



PASSENGER CUM MATERIAL HOIST - ACCESSORIES / FEATURES

RACK & PINION FOR PRECISE CONTROL

Mast fixed with rack provides passenger and material movement up to a height of 200 mtr. and produce low vibrations while travelling between mast joints.

3D Mast design is tested under simulated load conditions in FEA software for suitability of design. Adjusting module ensures that the roller is in contact with mast at all times giving better grip. Double roller system ensures transferring of uniform load on the mast.

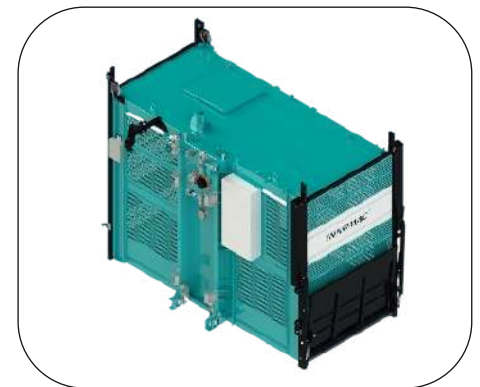


DRIVE UNIT

We are using reputed and proven makes of motor & Gear Box like Bonfiglioli. The drive unit consists of two helical-bevel gear box / Inline planetary gear box with motors and it is located above the hoist cage. The drive unit pinions engage with the rack on the mast. The motor are equipped with electromagnetic disc brakes integrated with VFD, which ensure the smooth ride, start and stop. Powder coated finish increases shelf life of structure and high end protection against rust.

CAGE / CAR UNIT

The CAGE / CAR Unit is fabricated by referring IS-513 grade material along with perforation in its side walls & door, slides vertically with a half foldable exit door. This makes bridge between cage and building floor. The entry door has electro magnetic lock that can be opened only when the electric supply is given. The Dual Guide roller systems ensures the easy alignment and smooth accurate motion of the cage along the mast. The cage unit is powder coated / Epoxy painted to give corrosion free life for the unit.



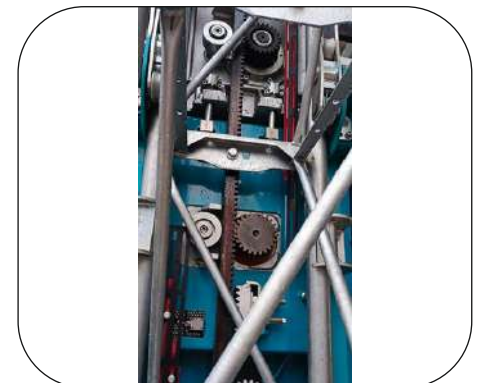
LOW POWER CONSUMPTION

VFD will only consume the power that's needed, thus saving energy compared to contactor and soft-starters, thereby increasing the machine efficiency.

Deceleration and lowering of a hoist creates regenerative energy produced by the motor. This energy can be transformed into heat using a braking resistor or conditioner and send back to the source, thus leading to net energy savings. An AC regenerative drive will redistribute that energy, which would otherwise be wasted when converted to heat with a braking resistor.

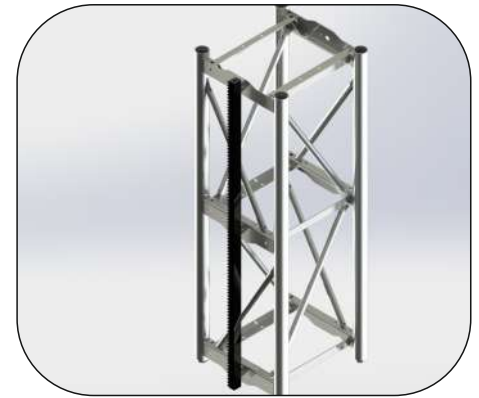
MECHANICAL SERVICE LOCK

This service maintenance mechanical lock will ensure that if anybody operate the cage while doing service maintenance it will not allow the machine movements so that operator can freely do his work.



MASTS

The Masts are manufactured using reputed brand steel pipes with precise fixtures and final manufacturing by MIG welding process. Hence it helps for inter-changeability, proper butting, smooth drive for cage and high reliability. Hot dip galvanised finish with 80-100 GSM provides a strong zinc coating protective finish to prevent rust and corrosion. Galvanised finish is scratch resistant and high in aesthetics. The heavy duty round tubes are used to make this square masts used universally.

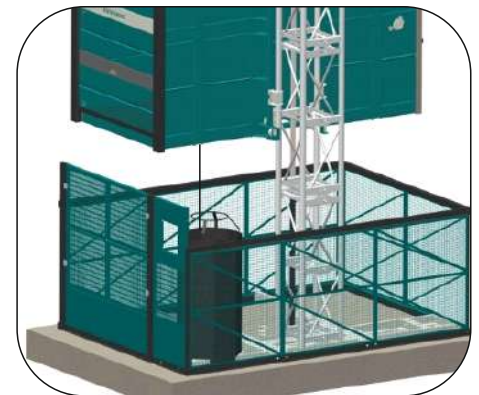


JIB CRANE ASSEMBLY

Jib crane Assembly is an essential part of PM Hoist that aids in the building of mast assembly at the construction site and disassembling of mast sections one over the other. It is used for lifting the mast for assembly one over the other. Similar way it is used for dismantling the mast also. The jib crane has a motor of 1KW and lifting capacity of 250kgs. Wire rope of diameter 6mm is used to lift mast upto the height of 30m, with an operating speed of 5 to 10 m/min.

CABLE DRUM SYSTEM

The Power cable to the PM Hoist is guided between the cable collecting drum at ground level and the cable holder fixed to the top of the cage. The cable holder arm is used to drag the main cable up and down to safely pass through the wall tie frame to avoid any physical damage to the cable. This cable is wound into the drum mounted on to the base assembly.



BUS BAR SYSTEM

This being the most advanced system in PM Hoist equipment eliminates the use of physical heavy duty power cable requirement giving an advantage of Less maintenance and chances of Low break down to the machine. Bus bar fixed to the mast of the machine are modular in design. It can be fixed to any desired height connecting one by one. In case of any fault it is easy to replace or repair only the damaged part.



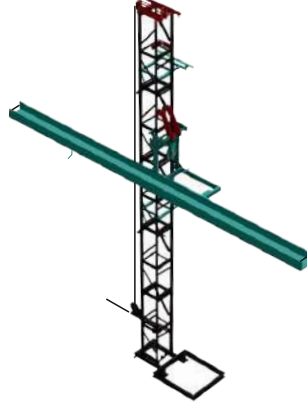
INNOMAC MATERIAL HOIST : IMH -1000 & IMH-1500



**Material Hoist
(Standard Machine)**



**Tiltable Concrete Bucket
(0.3 cubic mtr)(Optional)**



**12 mtr Rebar Carrying
Attachment (Optional)**



**Marble / Granite
Slabs Attachment (Optional)**



**Glass / Facade Attachment
(Optional)**

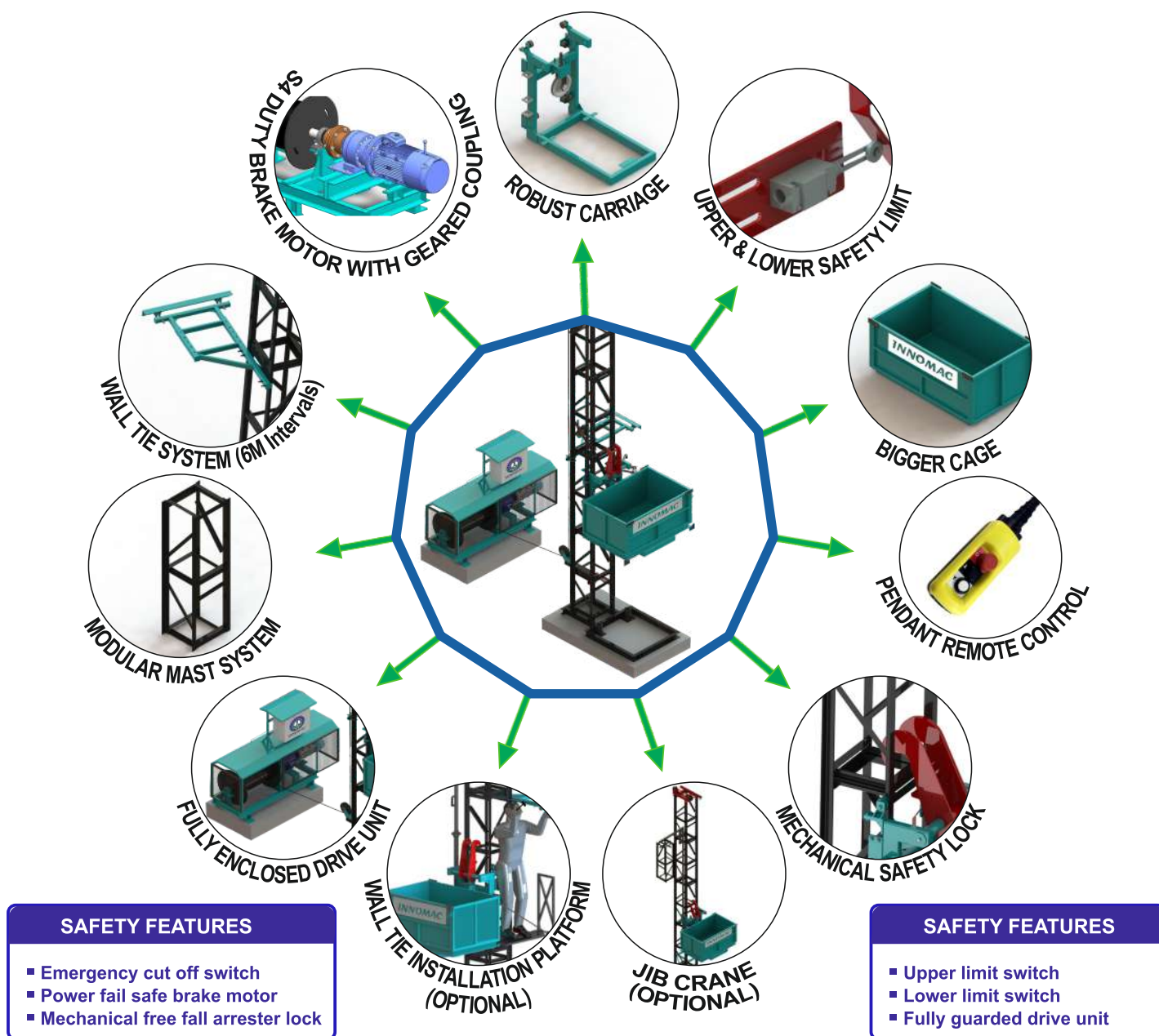
INNOMAC Material Hoist is a Rugged designed system for easy vertical material movement in construction sites offering best in class features, reliability and safety. The drive system of the machine is with latest technology In-line planetary gearbox and energy efficient reliable S-4 Duty Brake Motor. The built-in brake system in the motor provides safety by self-locking during power failure, the Machine also has a mechanical safety lock in case of any rope slips / rope damage.

SPECIFICATION

| SI.NO | Model No | IMH - 1000 | IMH - 1500 |
|-------|-----------------------------------|--|--|
| 1 | Gross Lifting Capacity | 1 Ton | 1.5 Ton |
| 2 | Net lifting Capacity | 800 Kgs | 1200 Kgs |
| 3 | Max. Lifting Height | 70 Mtrs Std, (Higher Height on Optional) | 70 Mtrs Std, (Higher Height on Optional) |
| 4 | Lifting Speed | 30-35 Mtrs/Min | 30-35 Mtrs/min |
| 5 | Motor Capacity | 10 HP, 3 Phase Brake Motor | 12.5 HP, 3 Phase Brake Motor |
| 6 | Power Required | 3 Phase, 50HZ,415 V AC, 14.1 Amps | 3 Phase, 50HZ,415 V AC, 19 Amps |
| 7 | Rope Size | Ø12mm (6 x 36) | Ø14mm (6 x 36) |
| 8 | Mast Size (LxBxH) | 500 x 400 x 1500 mm | 500 x 400 x 1500 mm |
| 9 | Rectangular Cage Size (LxBxH) | 1250x830x610 mm | 1250x830x610 mm |
| 10 | Wall Tie Interval | 6 Mtrs | 6 Mtrs |
| 11 | Machine Weight (70 Mts) | 3500 Kgs Approximate | 4000 Kgs Approximate |
| 12 | Rebar Tray Length (Optional) | 7 Mtrs | 7 Mtrs |
| 13 | Rebar Lifting Capacity | 550 Kgs | 750 Kgs |
| 14 | Granite / Marble Lifting Capacity | 550 Kgs | 750 Kgs |
| 15 | Drive System | Planetary Gear Box | Planetary Gear Box |

Note: We do have customised bucket, wall tie, load cell and VFD drive systems. Please enquire about these with our executive.

KEY FRATURES OF INNOMAC MATERIAL HOIST



STANDARD ACCESSORIES :

- **Mechanical Safety Lock:** This is a free fall protection system which automatically latches the material cage to the mast in case of any rope failure.
- **Hour Meter:** INNOMAC has introduced Hour meter in material hoist which can help P & M team to monitor the machine utilization and plan scheduled maintenance activities.
- **Upper and Lower Limit Switch:** All models come with safety top and bottom limit switch as a standard feature which auto cuts off the power in case of the operator missing to switch it off in time.
- **Emergency Shut-Off Switch:** INNOMAC provides dual emergency switches, one on the control panel and another on the pendant as a standard safety feature which can be used in case of an emergency to stop the machine immediately.
- **Pendant Operation System:** This helps the operator to control the machine easily moving around it.
- **Heavy Duty Gear Box:** Planetary Gear Box is directly coupled with the brake motor and thus eliminates conventional belts & chains, hence is low Maintenance Technology.
- **Bigger Cage:** INNOMAC Provides the largest cage among any brands with the size of 1250 x 830 x 610 mm this helps to carry big volume Materials, concrete blocks and other items up to the rated net capacity of the equipment.
- **Masts:** The Masts are Designed for highest reliability factor, made on necessary jigs and fixtures to ensure interchangeability and perfection of fabrication.
- **Wall Ties:** This eliminates the scaffolding and other arrangement costs for installing the masts. The wall ties are designed for fixing at 6-meter intervals.
- **Jib Crane Unit (Optional) :** Special attachment with manual winch to ensure safe & easy erection of mast structure / tower.
- **Wall tie Installation Platform (Optional):** INNOMAC has introduced wall tie installation platform for the first time in India for material hoists



INNOMAC[®]
machines with global innovation...

View the site working



ICL 300



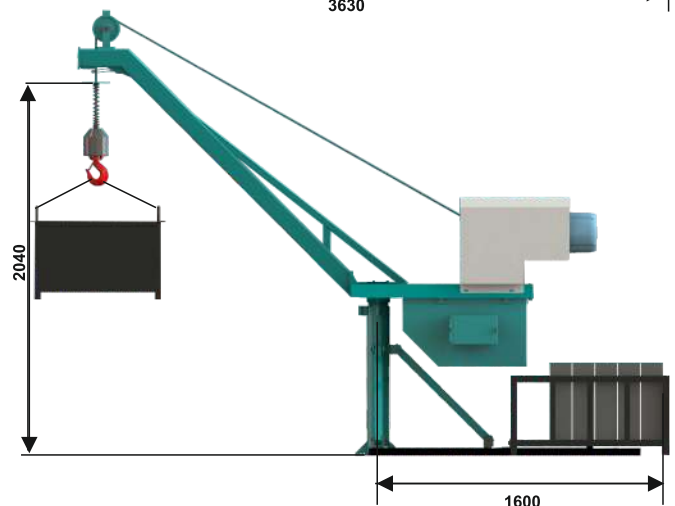
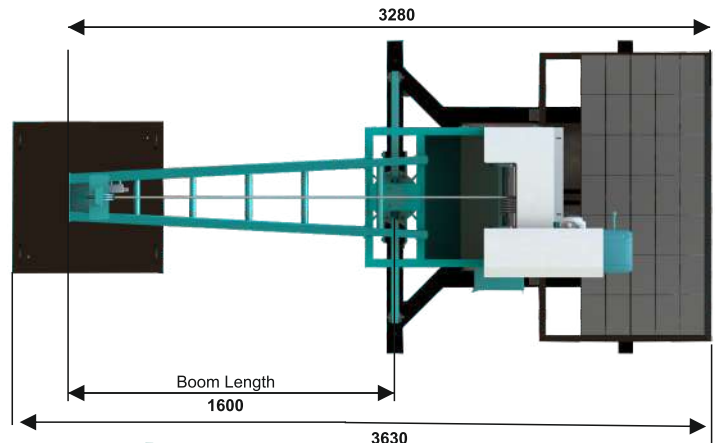
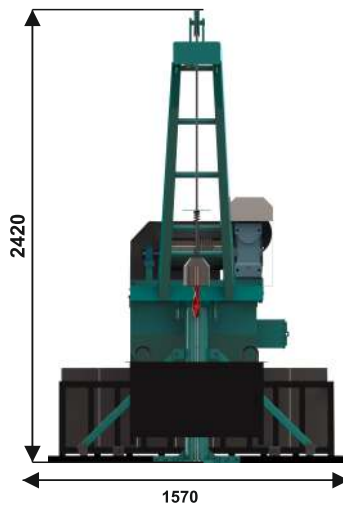
ICL 500



INNOMAC CONSTRUCTION LIFT - 300 & 500 KGS

Innomac Construction Lifts are robust in design having best in the segment features like high Operating Speed, 360° Rotation, Safety limit switch, rigid drive system and ect. The Structure and major components are designed with FEA to meet higher reliability of the equipment.

All Dimensions are in mm



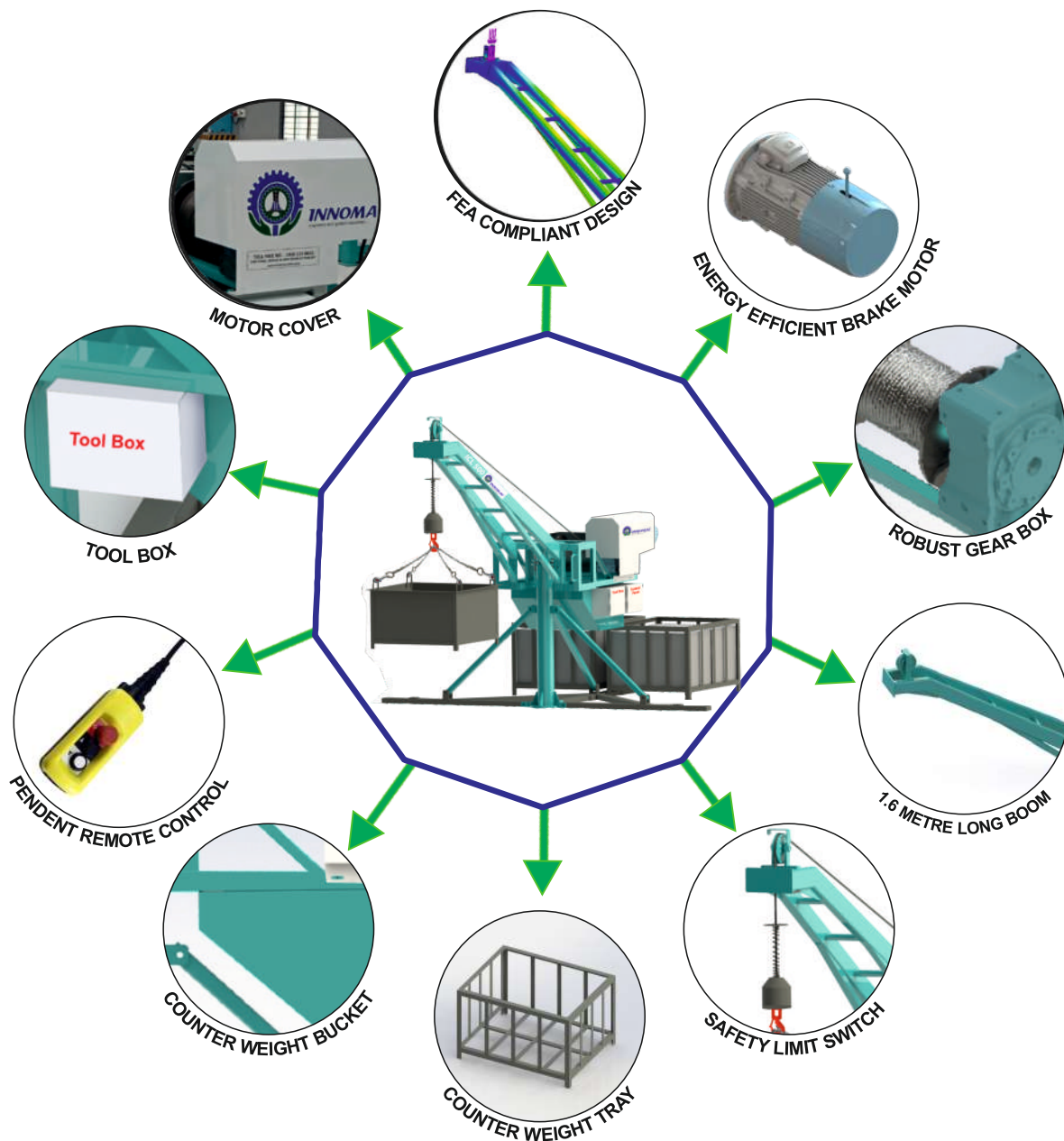
SPECIFICATION CHART

| Sl.No | Model | ICL- 500 | ICL- 300 |
|-------|-----------------------|------------------------------------|------------------------------------|
| 1 | Capacity | 415 kg | 250 kg |
| 2 | Lifting Height (mtrs) | 70 | 70 |
| 3 | Lifting Speed (max) | 27 Mtr./min | 27 Mtr./min |
| 4 | Motor Capacity | 5HP, 1440 RPM | 3HP, 1440 RPM |
| 5 | Power Required | 3 Phase, 50 Hz, 415 V AC, 7.2 Amps | 3 Phase, 50 Hz, 415 V AC, 5.1 Amps |
| 6 | Rotation | 360° | 360° |
| 7 | Rope Size | 10mm (Strand 6 x 36) | 8 mm (Strand 6 x 36) |
| 8 | Overall Size | 3450mm x 2420mm x 1460mm | 3170mm x 2160mm x 1310mm |
| 9 | Counter Weight | 1500 Kg | 1000 Kg |
| 10 | Machine Weight | 418 kg | 320 Kg |

Note: Counter Weight are not in our scope

Note: We do have customised buckets, load cell and wheel barrow. Please enquire about all with our executive

FEATURES OF INNOMAC CONSTRUCTION LIFT



NOTE : Please enquire about the customised application of the mini lift with our executive

STANDARD ACCESSORIES :

- **Brake Motors:** Innomac is providing rugged make-in-India and energy efficient motors for longer life and higher energy efficiency. The electro-mechanical built-in brake systems ensures safety during power failures.
- **Robust Gear Box:** This machine comes with a heavy-duty speed reduction gear box directly coupled to the rope drum, thus eliminating any belt drives.
- **1.6-Metre-Long Boom:** This equipment provides very long boom of 1.6 meter with 500 kg capacity with a very compact footprint which is best in its segment.
- **Safety Limit Switch:** All models come with a safety top limit switch as a standard option with auto motor cut-off, in case of operator missing to switching it off on time.
- **Counter Weight Tray:** The machine can be attached to two rugged counter weight trays which are specially designed to take 4" or 6" concrete blocks.
- **Counter Weight Bucket:** Apart from the machine counterweight system we also provide a boom counterweight system to balance the weight of the boom.
- **Pendant Operation Control:** Machine is controlled by a relay-based control panel which auto cuts off in case of overload, over traverse. The operator buttons are mounted through the remote pendant for easy of operation.
- **Tool Box:** Innomac has introduced tool box in mini-lift for the first time in the industry, which can be used to store tools or any ready spare parts.
- **Winch Motor Cover:** The machine comes with fully guarded motor and gear box which provides safety and protection.
- **FEA Complaint Design:** The machine is tested and verified both practically and by FEA software to get the best performance of the machine.

OPTIONAL ACCESSORIES :

- **Brick Handling Tray :** Specially designed, mesh covered tray for lifting concrete blocks in construction sites.
- **Sand/Concrete Tray :** Specially designed robust structure concrete tray with no leakage.
- **Load Cell :** This acts as a overload protection when the load crosses 500KG.
- **Counter Weight :** Specially designed high grade concrete counter weight with steel enclosure and handle for longer life.



INNOMAC[®]
machines with global innovation...

View the site working



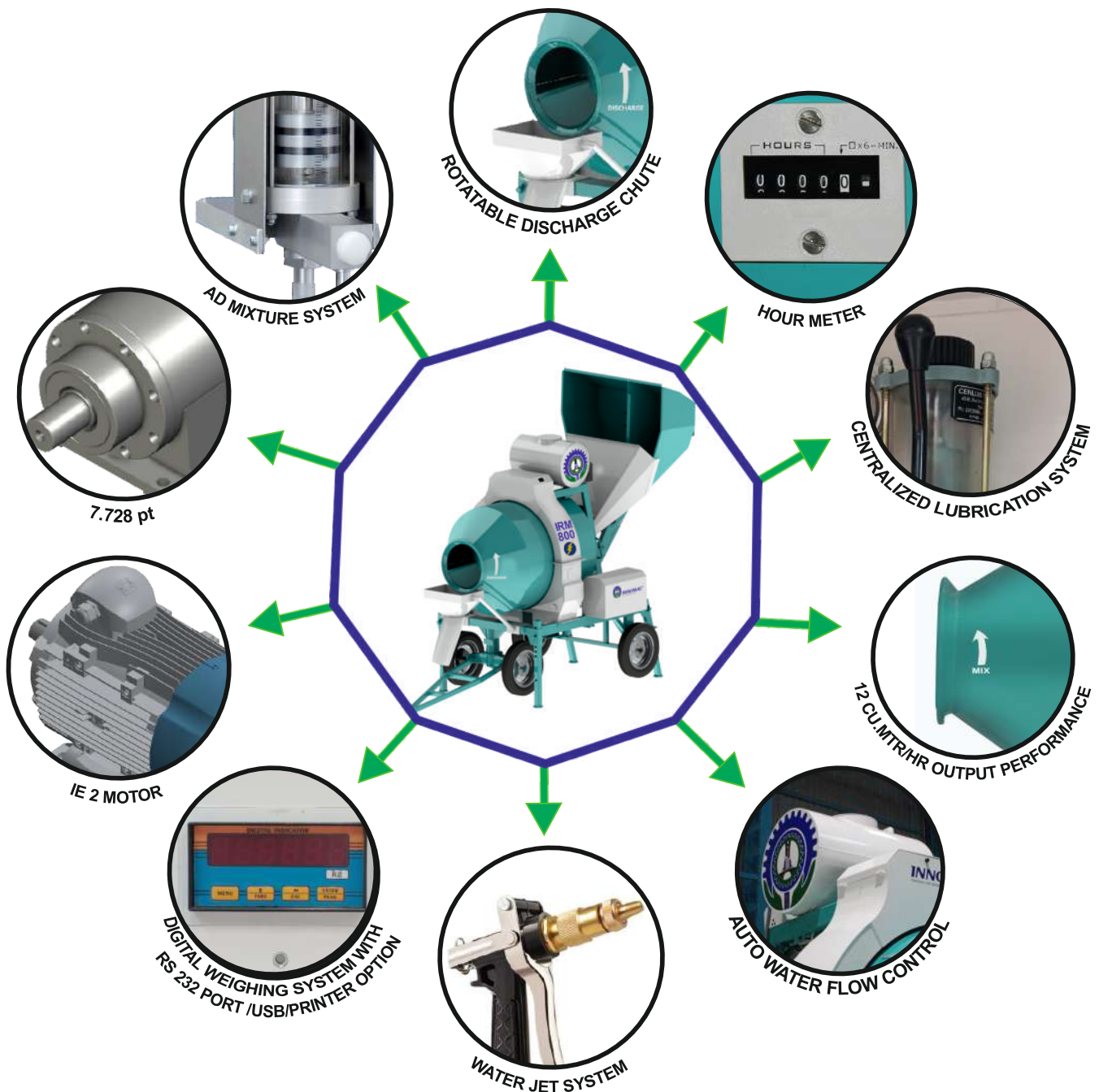
REVERSIBLE CONCRETE MIXER

INNOMAC Designs, Manufactures and supplies the range of Reversible Concrete Mixer. Our machines are highly efficient, Safe and durable with advanced features. Quality stands first for INNOMAC and our machines reflect it in every aspect.

SPECIFICATION

| SI.NO | Description | Model : IRM 800 |
|-------|--------------------------------|--|
| 1 | Model No | IRM - 800 Electric |
| 2 | Batch Capacity(Ltr) | 600 |
| 3 | Output Capacity Cu. m / hr | 12 |
| 4 | Drum Speed (RPM) | 15 |
| 5 | Main Drive (Phase/HP) | 3-Phase / 10-HP |
| 6 | Water Tank Capacity(Ltr) | 170 |
| 7 | Water Pump (Discharge) | 1 |
| 8 | Water Pump (Charge) | 0.5 |
| 9 | Hopper / Bin | Standard :2 Bins. Optional: 1 & 3 Bins |
| 10 | Pneumatic Wheels/Pin Type(Nos) | 4 (6.00-16) |
| 11 | Lubrication System | Centralized, Oil - Manual |
| 12 | Dimensions | 4300x2000x2900 |
| 13 | Drive System | Planetary Gear Box |
| 14 | Vibrating Motors (HP) | 0.5 |

FEATURES OF INNOMAC REVERSIBLE MIXER



STANDARD ACCESSORIES :

- **Hour Meter:** IRM 800 comes with hour meter which helps P&M team to Monitor utilization and plan scheduled maintenance.
- **Centralised Lubrication System:** Machine is built with centralised lubrication system to reduce the efforts of lubricating all bearings periodically.
- **Digital Weighing System:** The machine comes with load cell and digital display window with a provision of RS 232/ USB port and printer facility as an option.
- **IE 2 Motors & Planetary Gear Box:** Machine is powered by 3 Phase 10 HP Induction motor and oil filled planetary gear box which reduces power loss during transmission and eliminates maintenance risks
- **Hopper Bins:** 2 Bins are provided for loading the material in standard version. Bin Nos. may vary from 1 to 3 upon requirement.
- **Foot Rest & Handle:** Innomac has given foot rest and maintenance assist handle to help operator in reaching parts at heights.
- **Tool Box:** Machine comes with inbuilt tool box containing necessary tools required for maintenance.

OPTIONAL ACCESSORIES :

- **Discharge Chute:** Innomac is providing rotatable discharge chute for the first time in IRM 800 to assist the operator in controlling the flow direction of discharged concrete mix.
- **Auto Water Flow Control:** System comes with provision of both manual & auto control of water flow into the drum
- **Water Jet Gun:** Innomac has introduced water jet gun to help the operator in cleaning the machine after work
- **Admixture System:** The machine comes with manual Ad-mixture pump with measuring scale on it, which helps users in controlling the required quantity of ad-mixture liquid.
- **Concrete Tray:** Specially designed, Robust structure concrete tray will be given to increase the efficiency of the job.



INNOMAC[®]
machines with global innovation...

View the site working



ROPE SUSPENDED PLATFORMS

INNOMAC Rope Suspended Platform are with various models suiting to different application. Our machines are highly efficient, safe and durable with advanced features. Quality stands first for INNOMAC and our machines reflect it in every aspect.

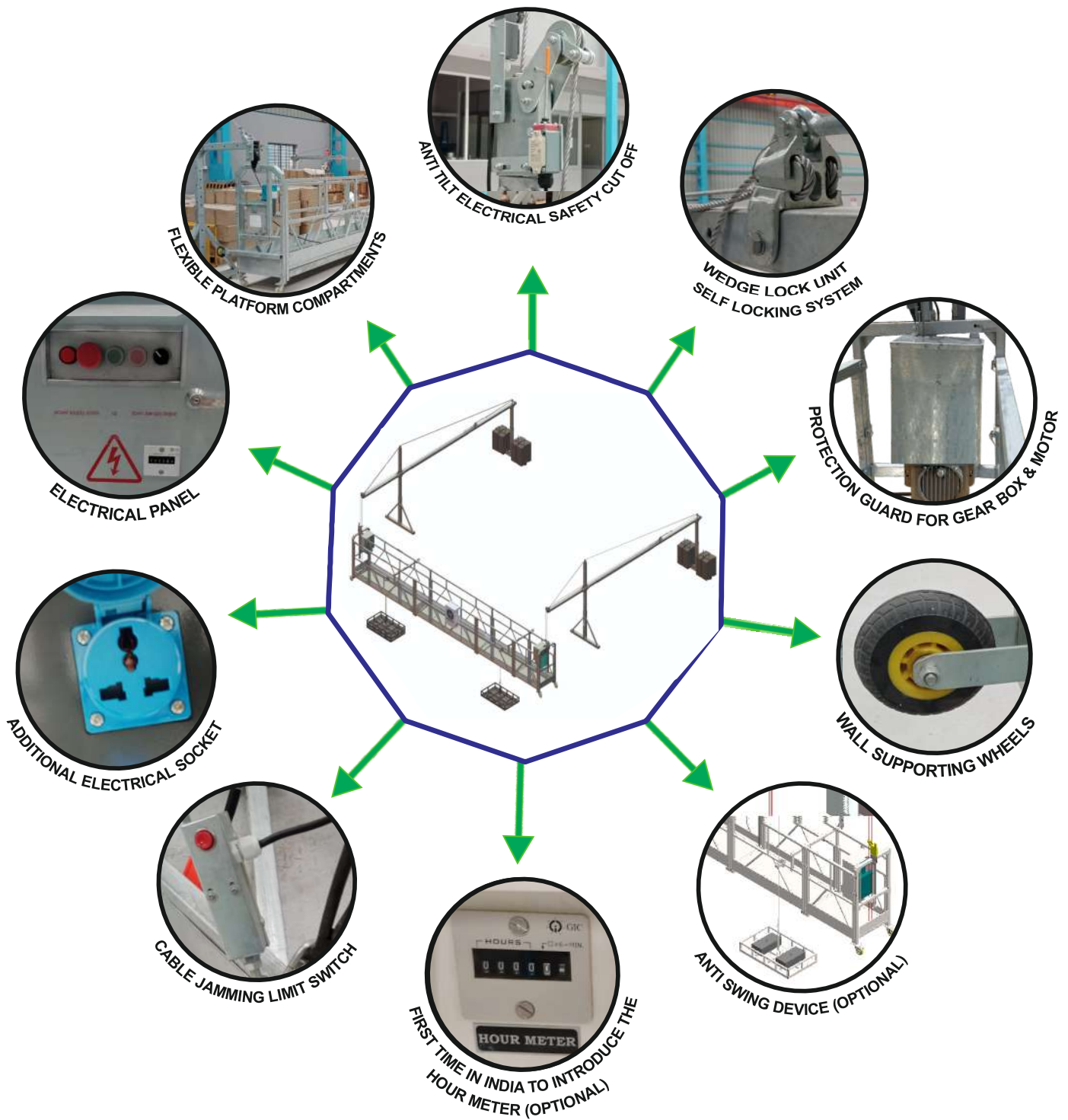
SPECIFICATION

| Model No. | ISP800P / ISP800B | | ISP1000P / ISP1000B | |
|-------------------------------|--------------------|--------------------------------------|---------------------|--------------------------------------|
| Rated Load(kg) | 800 | | 1000 | |
| Lifting Speed(mtrs/per min) | 8 - 9 | | 8 - 9 | |
| Motor Power(kW) | 2×1.8kW, 50HZ | | 2 No's×2.0kW, 50HZ | |
| Brake Torque(Nm) | 16 | | 16 | |
| Anti Tilt Locking | 3°-8° | | 3°-8° | |
| Locking Distance | ≤100 | | ≤100 | |
| Suspended Platform | Finishing | Hot Dip Galvanized Steel | | Hot Dip Galvanized Steel |
| | L×W×H(mm) | (2500x2+1500x1+1000x1)=7500x1000x690 | | (2500x2+1500x1+1000x1)=7500x690x1000 |
| | Weight(kg) | 540 kG (Approx.) | | 540 kG (Approx.) |
| Suspension Mechanism(kG's) | 2×175 Kg's | | 2×175 kG's | |
| Total Machine Weight (kG's) | 760 kG's (Approx.) | | 800 kG's (Approx.) | |
| Counter Weight(kG) optional | 25×40pcs | | 25×48pcs | |
| Diameter of Steel Rope(mm) | Ø 9.1 | | Ø 10.2 | |
| Standard Working Height(m) | 100Mtrs | | 100Mtrs | |
| Motor Rotation Speed(per/min) | 1420 | | 1420 | |
| Voltage(v) 3Phases | 380V/415V | | 380V/415V | |

Optional Customised Accessories Available

- Platform for curved Surface Application
- Side Extension
- Anti Swing Device
- Front Foldable Extension
- Wider platform for 9m, 12m, 15mtrs & 20mtrs Length
- Load Cells
- Parapet Clamps

FEATURES OF INNOMAC ROPE SUSPENDED PLATFORM



Applications of Suspended Working Platform:

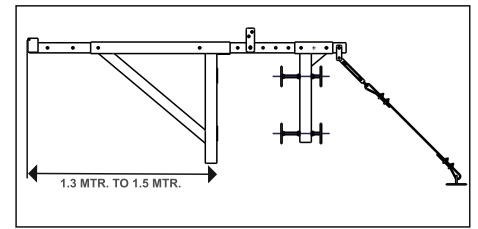
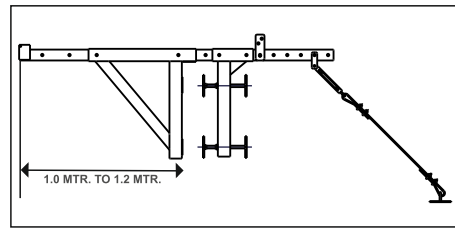
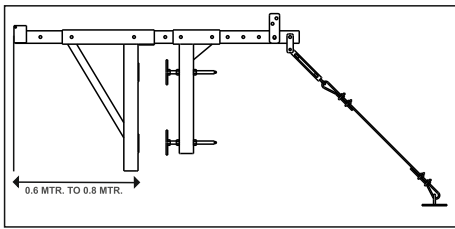
- Cleaning and maintaining of the exterior wall of high rise-buildings.
- Painting, decoration and refurbishing of exterior wall of buildings.
- Installation projects and other construction works on outer walls of high-rise buildings.
- Aerial working of ship, large towers, bridges dams and large chimneys.
- Installation and maintenance of high-rise building's elevator hoist way, shipbuilding industry, seagoing vessel, warships welding, etc.

Advantages of Suspended Working Platform:

- Suspended working platforms are designed and constructed in modular form. Hence it can be mounted in any size from 1.5 - 7.5 meters.
- The connection of the individual parts of the structure in each unit is made with nuts and bolts.
- The suspended platform is equipped with wheels for easy movement around the construction site.
- The working platform has bolt type and pin type joints.
- Modular design. Easy to disassemble, assemble operate and maintain.
- Lifting height can be adjusted according to requirement (Maximum 100 Meters)

VARIOUS OPTIONS, ACCESSORIES & SUSPENDED PLATFORM

1. TYPES OF PARAPET CLAMP



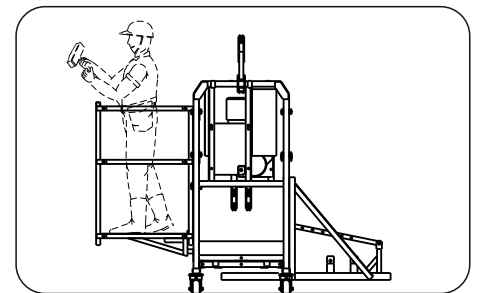
In places where the site condition is not favorable for the placement of roof supporting device a parapet clamps are provided. We offer 3 types of parapet clamps which comes in 3 different lengths with a lifting capacity of 800 Kg.

2. FRONT FOLDABLE EXTENSION



STANDARD FOLDABLE EXTENSION

Innomac provides the Standard Front Foldable Extension with the Platform Length of 0.69M and Platform Width of 1M. This Front Foldable Extension gives access to labor at building projection up to 1 Mtr. This system can be positioned at any position throughout the platform length.



OVERVIEW LINE DIAGRAM



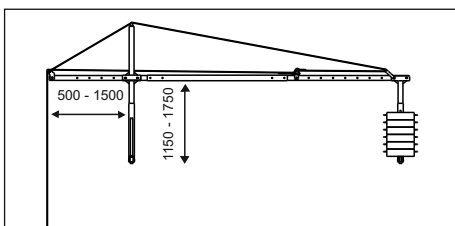
1.0 Mtr. CUSTOMIZED FOLDABLE EXTENSION

Innomac provides the Customized Front Foldable Extension with the Platform Length Up to 1.2M and Platform Width of 1M. This Special Front Foldable Extension gives access to labor at building projection up to 1.5M to 1.8M This system can also be positioned at any position throughout the platform length.



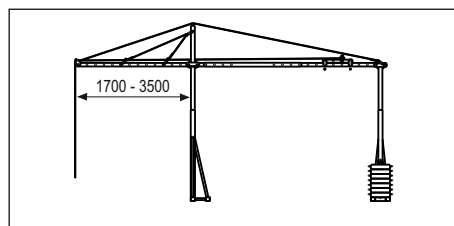
1.2 Mtr. CUSTOMIZED FOLDABLE EXTENSION

3. ROPE SUSPENSION UNIT



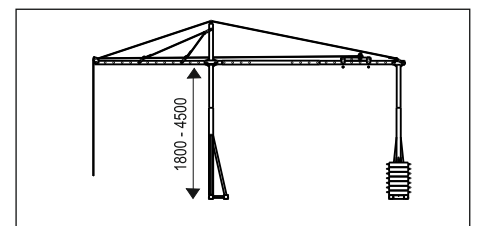
STANDARD ROPE SUSPENSION UNIT

Innomac provides the standard Customized Rope Suspension Unit with 0.5M to 1.5M Outreach / Long Beam adjustment & 1.15M to 1.75M Height / Height Beam adjustment.



LONG BEAM ROPE SUSPENSION UNIT

Innomac provides the Customized Rope Suspension Unit system with 1.7M to 3.5M Outreach / Long Beam adjustment based on customer requirement & Site Conditions. This will be used when the building elevation designs are made with more projection.



HIGH BEAM ROPE SUSPENSION UNIT

Innomac provides the Customized Rope Suspension Unit system with 1.8M to 4.5M Height / High Beam adjustment based on customer requirement & Site Conditions. This will be used when the building elevation designs are made with more projection than the terrace level.

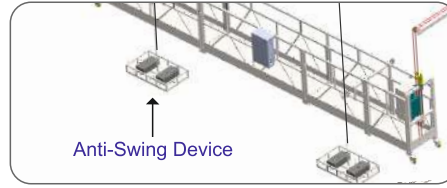
VARIOUS TYPES & APPLICATIONS, ROPE SUSPENDED PLATFORM

4. ADJUSTABLE "W" FRAMES



The Adjustable "W" – Frames based on the Customer requirement and Site Conditions. Special 'W' Type' frame gives access to labor even at building corners. This ensures that with minimum distance between roof supporting device, you can use entire 7.5 mtr. platform length.

5. ANTI-SWING DEVICE



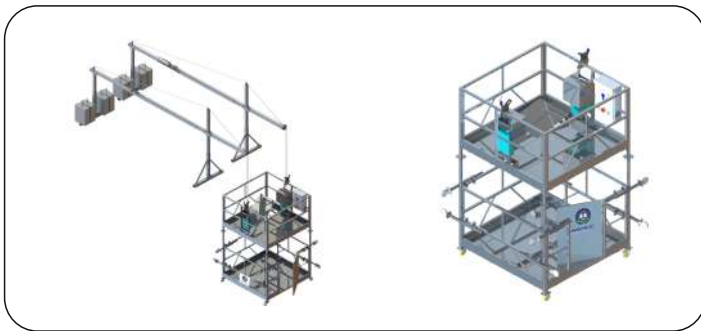
Innomac providing Anti-Swing Device system to avoid the swing movement of cradle while working.

6. PLATFORM SHADE



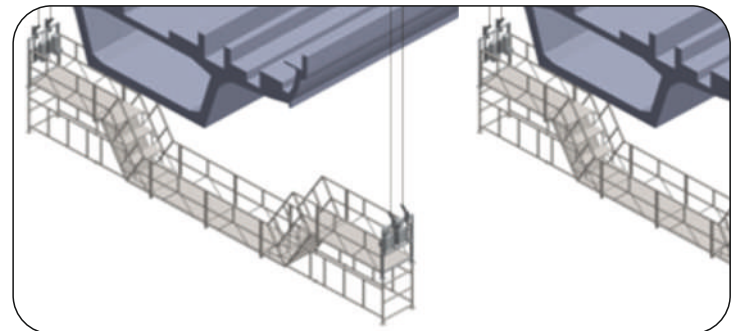
A platform shade can be used to avoid any fall of objects like Sand, Cement, Concrete or any Debris from the above on to the person working on the platform.

7. LIFT SHAFT CRADLE



Innomac providing Customized Lift Shaft Cradle as per Customer requirement and Site conditions. This lift shaft cradle can be used in Lift Shaft Maintenance.

8. UNDER BRIDGE CUSTOMIZED ISP



Innomac providing Customized Under Bridge Working Platforms as per Customer requirement and Site conditions. This can be used in all types of Road Bridges, Above Sea Bridges and Metro Bridges

9. CIRCULAR CRADLE



Innomac providing Customized Circular Cradle as per Customer requirement and Site conditions. This circular cradle can be used in Chimineas.

10. CUSTOMIZED ROPE SUSPENSION UNIT (3.5M H & 2.5M L)



Innomac can design and supply customized rooftop units for sites suitable height and longer overhang requirements.

11. 15 Mts WORKING PLATFORM



12. 21Mts UNDER BRIDGE WORKING PLATFORM





INNOMAC[®]
machines with global innovation...

View the site working



INNOMAC BMU

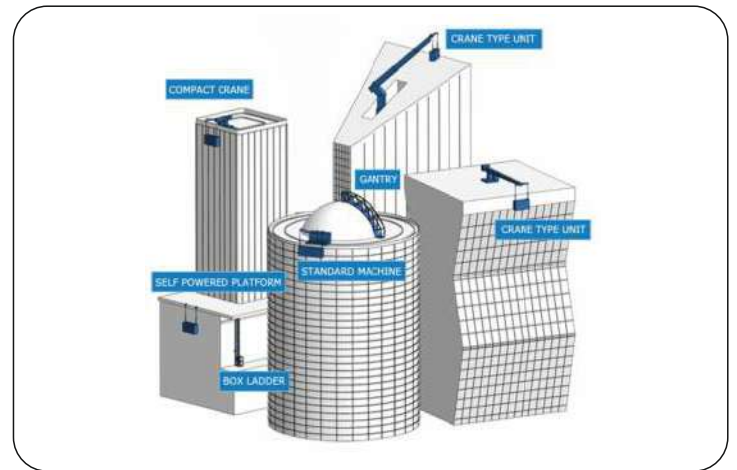
INNOMAC Design, maintenance, supply and install the range of building Maintenance Units (BMU) for all kind of high rise buildings, offices, complexes malls etc's.. based on the customer's and building requirements

The design and manufacturing standard, monitored with highest quality standards

A building maintenance unit (BMU) is an automatic, remote-controlled, or mechanical device, usually suspended from the roof, which moves systematically over some surface of a structure while carrying human along with window cleaning accessories. BMU's will suits for both exterior and interior structure of a building based on requirement.

WE CAN OFFER

- Roof and Parapet mounted Machines
- Monorail Systems
- All Types of Davit Systems
- Self Powered Cradle
- Gantry Systems
- Temporary Access Solutions
- Life Line Arrest Systems



OUR CERTIFICATIONS



Certificate of Compliance

We hereby declare that the technical file of product complied with the requirement of directives Machinery Directive 2006/42/EC

Applicants
 Name : INNOMAC ENGINEERING INDUSTRIES PRIVATE LIMITED
 Address : 13, 3RD FLOOR, 1ST BLOCK, NARAYANA NAGAR, ANJANAPURA MAIN ROAD, DODDAKALLASANDRA, BANGALURU-560062, KARNATAKA, INDIA

Product : MANUFACTURE AND SUPPLY OF BAR CUTTING MACHINES, BAR BENDING MACHINES, SUSPENDED ROPE PLATFORMS, CONCRETE MIXER, MULTIFUNCTIONAL MATERIAL HOIST, PASSENGER CUM MATERIAL HOIST, BUILDING MAINTENANCE UNIT AND SPARE PARTS

Complies with the requirements applicable to it
 The Certification body has performed an audit of the above product quality system covering the design, manufacture and final inspection of the certified product. The quality system has been assessed, approved and is subject to continuous surveillance according to the Machinery Directive 2006/42/EC

This certificate is issued under the following conditions:
 It applies only to the quality system maintained in the manufacture of above referenced models and it does not substitute the design or type-examination procedures, if requested.

1. The certificate remains valid until the manufacturing conditions or the quality systems are changed.
2. The certificate validity is conditioned by positive results or surveillance audits.
3. After fulfilling the relevant EU legislation, the manufacturer shall affix to each product, of the above referenced models.
4. The CE mark as shown above can be used, under the responsibility of the manufacturer, after completion of an EC Declaration of conformity and compliance with all relevant EC Directives. The statement is based on a single evaluation of one sample of above mentioned product. It does not imply an assessment of the whole production.

Certificate No. QVA-ILIV-23-2722821

Certificate can be verified at www.gsafrs.it

| | |
|---|----------------------------|
| Date of Certification | 27 th JUNE 2023 |
| 1 st Surveillance Due | 26 th JUNE 2024 |
| 2 nd Surveillance Due | 26 th JUNE 2025 |
| Certificate Expiry (Subject to the company maintaining its system to the relevant standard) | 26 th JUNE 2026 |

Registered

Authorized Signatory

CE

QVA Certification
 QVA Address : Maryland Avenue, SW Washington, D.C. 20024
 Validity of this certificate is subject to annual surveillance audits to be done successfully
 This certificate is the property of QVA Certification and shall be returned immediately on request
 QVA Certification is an independent Systems Products and Research assessment Body, QVA Certification is accredited by GAAPF,US



Registration Certificate

This is to certify that

INNOMAC ENGINEERING INDUSTRIES PRIVATE LIMITED
 13, 3RD FLOOR, 1ST BLOCK, NARAYANA NAGAR, ANJANAPURA MAIN ROAD, DODD KALLASANDRA, BANGALORE - 560062, KARNATAKA, INDIA.

has been assessed by RAPL and found to comply with the requirements of

ISO 9001 : 2015
Quality Management Systems

For the following activities:
 MANUFACTURE AND SUPPLY OF BAR CUTTING MACHINES, BAR BENDING MACHINES, SUSPENDED ROPE PLATFORMS, CONCRETE MIXER, MULTIFUNCTIONAL MATERIAL HOIST, PASSENGER CUM MATERIAL HOIST, BUILDING MAINTENANCE UNIT AND SPARE PARTS.

Certificate Number: E2024017038
 Date of certification: 25/01/2024
 1st Surveillance on or before: 24/01/2025
 2nd Surveillance on or before: 24/01/2026
 Certification Valid Until: 24/01/2027

Director (Certification)
Royal Assessments Pvt. Ltd.
 823 A, Tower-B, 17th, Plot No. A - 40, Sector - 02, Noida 201301, India
www.royalass.com, info@royalass.com
 Phone : +91 120 4251328
 This Certificate can be verified at www.royalass.com

EGAC MEMBER OF MULTILATERAL RECOGNITION ARRANGEMENTS **IAF**

This Certificate remains the property of Royal Assessments Private Limited. Must be returned on request or if certificate is withdrawn. Validity of this certificate is subject to successful surveillance audits. RAPL is accredited by EGAC. EGAC is member of International Accreditation Forum (IAF) and signatory of MLA.



Registration Certificate

This is to certify that

INNOMAC ENGINEERING INDUSTRIES PRIVATE LIMITED
 13, 3RD FLOOR, 1ST BLOCK, NARAYANA NAGAR, ANJANAPURA MAIN ROAD, DODD KALLASANDRA, BANGALORE - 560062, KARNATAKA, INDIA.

has been assessed by RAPL and found to comply with the requirements of

ISO 14001 : 2015
Environmental Management Systems

For the following activities:
 MANUFACTURE AND SUPPLY OF BAR CUTTING MACHINES, BAR BENDING MACHINES, SUSPENDED ROPE PLATFORMS, CONCRETE MIXER, MULTIFUNCTIONAL MATERIAL HOIST, PASSENGER CUM MATERIAL HOIST, BUILDING MAINTENANCE UNIT AND SPARE PARTS.

Certificate Number: E20240127201
 Date of certification: 01/02/2024
 1st Surveillance on or before: 31/01/2025
 2nd Surveillance on or before: 31/01/2026
 Certification Valid Until: 31/01/2027

Director (Certification)
Royal Assessments Pvt. Ltd.
 823 A, Tower-B, 17th, Plot No. A - 40, Sector - 02, Noida 201301, India
www.royalass.com, info@royalass.com
 Phone : +91 120 4251328
 This Certificate can be verified at www.royalass.com

EGAC MEMBER OF MULTILATERAL RECOGNITION ARRANGEMENTS **IAF**

This Certificate remains the property of Royal Assessments Private Limited. Must be returned on request or if certificate is withdrawn. Validity of this certificate is subject to successful surveillance audits. RAPL is accredited by EGAC. EGAC is member of International Accreditation Forum (IAF) and signatory of MLA.



Registration Certificate

This is to certify that

INNOMAC ENGINEERING INDUSTRIES PRIVATE LIMITED
 13, 3RD FLOOR, 1ST BLOCK, NARAYANA NAGAR, ANJANAPURA MAIN ROAD, DODD KALLASANDRA, BANGALORE - 560062, KARNATAKA, INDIA.

has been assessed by RAPL and found to comply with the requirements of

ISO 45001 : 2018
Occupational Health and Safety Management Systems

For the following activities:
 MANUFACTURE AND SUPPLY OF BAR CUTTING MACHINES, BAR BENDING MACHINES, SUSPENDED ROPE PLATFORMS, CONCRETE MIXER, MULTIFUNCTIONAL MATERIAL HOIST, PASSENGER CUM MATERIAL HOIST, BUILDING MAINTENANCE UNIT AND SPARE PARTS.

Certificate Number: E2024017039
 Date of certification: 25/01/2024
 1st Surveillance on or before: 24/01/2025
 2nd Surveillance on or before: 24/01/2026
 Certification Valid Until: 24/01/2027

Director (Certification)
Royal Assessments Pvt. Ltd.
 823 A, Tower-B, 17th, Plot No. A - 40, Sector - 02, Noida 201301, India
www.royalass.com, info@royalass.com
 Phone : +91 120 4251328
 This Certificate can be verified at www.royalass.com

EGAC MEMBER OF MULTILATERAL RECOGNITION ARRANGEMENTS **IAF**

This Certificate remains the property of Royal Assessments Private Limited. Must be returned on request or if certificate is withdrawn. Validity of this certificate is subject to successful surveillance audits. RAPL is accredited by EGAC. EGAC is member of International Accreditation Forum (IAF) and signatory of MLA.

“INNOMAC is Exporting its products to African countries, Middle East countries and Neighbouring countries. Please enquire our executives for more details”

Note: INNOMAC reserves its rights to modification or change the specification and features of our equipment, without any prior notice to costumers, This is due to continues improvement and development process.

TESTIMONIALS



“ We, Larsen & Toubro Ltd. are happy to share that we own INNOMAC Manufactured machines at our construction sites, INNOMAC is a trusted brand for us, their quality, support are excellent ”



“ INNOMAC is a trusted brand for us to use their high quality of most unmatched advanced features on bar cutting & bending machines. their service support is excellent.”



“ INNOMAC is our trusted brand to supply the quality & reliable with excellent service support on bar cutting & bar bending machines and material hoist.”



“ INNOMAC is a trusted brand for us. Your quality, reliability and personal experience has been unmatched by any other supplier.”



“ We are highly satisfied with INNOMAC products and their reliability, their sales & service team are most professional & highly flexible to meet our sites needs timely ”



“ We are very delighted in using INNOMAC brand bar cutting m/cs, bar bending m/cs, materials hoists and rebar lifting hoists across our various sites. Their equipments are most reliable, maintenance free and their service supports are the best we seen.”



“ We are having the big fleet of INNOMAC equipment across our sites there product & service support are out standing, we refer them to others ”



“ We appreciate the coordination, timely monitoring & efficient output from the machine which considerably reduces the wastage of steel at the site ”



“ The Quality, Performance & product support from INNOMAC is much better than the other brands equipments we are using ”



“ At KMV, We are using all range of INNOMAC equipments at our Pan India sites. we are very satisfied with products technology features and their product supports.”



“ In our overall projects, the biggest strength has been the quality of the machines and dedication of the Innomac Team ”



“ We are delighted to share that we own Innomac manufactured machines at our construction sites. The quality reliability and support they provide are excellent and unmatched ”

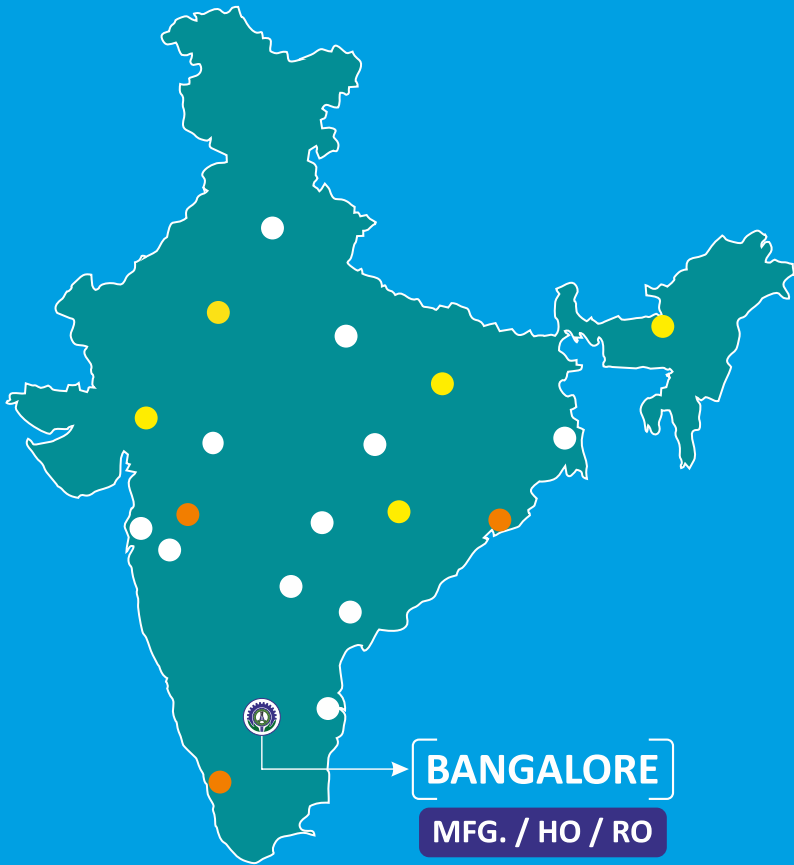
and many more.....

OUR VALUED CUSTOMERS



and many more.....

OUR PRESENCE



- NAGPUR
- INDORE
- BHUVANESHWAR
- CHENNAI
- COCHIN
- DELHI
- PUNE
- HYDERABAD
- JAIPUR
- KOLKATA
- LUCKNOW
- MUMBAI
- NASIK
- PATNA
- RAIPUR
- VIJAYAVADA

- INTERNATIONAL
- DUBAI

● Factory / HO / RO ● Established Branch ● Upcoming Branch ● Dealer

OUR PAN INDIA CONTACTS



INNOMAC[®]
machines with global innovation...

INNOMAC ENGINEERING INDUSTRIES PVT. LTD.

HEAD OFFICE : No. 13, 3rd Floor, 1st Block, Narayana Nagar, Anjanapura
Main Road, Doddakallasandra, Kanakapura Road, Bengaluru - 560 062
Ph: +91 6362905518 | Email: info@innomacindia.com

FACTORY : Sy. No. 48/1 & 48/2, Chikkabidarakallu, NH-4, Tumkur Road,
Bengaluru - 560 073 | Ph: +91 6362905518 | Email: info@innomacindia.com

BRANCHES

Karnataka & Kerala: +91 8088901765 / 6362905522

Tamil Nadu & Puducherry: +91 8088901768

Telangana & Andhra Pradesh: +91 8088901767

Bhubaneshwar: +91 9040666777 | Pune: +91 6362905503

Kolkata: +91 8951359700 | Western Region: +91 8088901766

Northern Region: +91 8904967705 | Nasik: +91 9823196801

Nagpur, Raipur & Indore: +91 8904345101

Dubai Dealer: +971 506447203



Bar Cutting Machine



Bar Bending Machine



Stirrup Bending Machine



Spiral Bending Machine



Scrap Bar Straightening Machine



Innomac Construction Lift



Building Maintenance Unit



Reversible Concrete Mixer



Rope Suspended Platform



Scaffolding Lift



Twin Cage Passenger / Material Hoist



Passenger cum Material Hoist



Rebar Material Hoist



Marble / Granite Slabs Handling



Material Hoist

www.innomacindia.com